

Objectives

To raise awareness about the prevalence and clinical relevance of myocardial infarction with non-obstructed coronary arteries (MINOCA). To teach the main etiologies of this syndrome and the best diagnostic strategies..

Target audience

Residents, fellows and trained cardiologists, both clinical, imaging specialists and interventionalists.

Directors

Josep Gómez Lara

Hospital Universitari de Bellvitge, L'Hospitalet de Llobregat, Spain

Enrique Gutiérrez Ibañes

Hospital Universitario Gregorio Marañon, Madrid, Spain

Promoted

Working group of intracoronary diagnostic techniques of the ACI-SEC

Funded



Abbott

Language

English

Date and location

Hotel Barceló Sants, Barcelona, Spain

February 2, 2024

Technical Secretariat

GRUPO PACIFICO

The power of meeting

Marià Cubi, 4 - Pral.

08006 Barcelona (España)

Tel. 932388777 - Ext. w4239 / 7239

jmedrano@pacifico-meetings.com



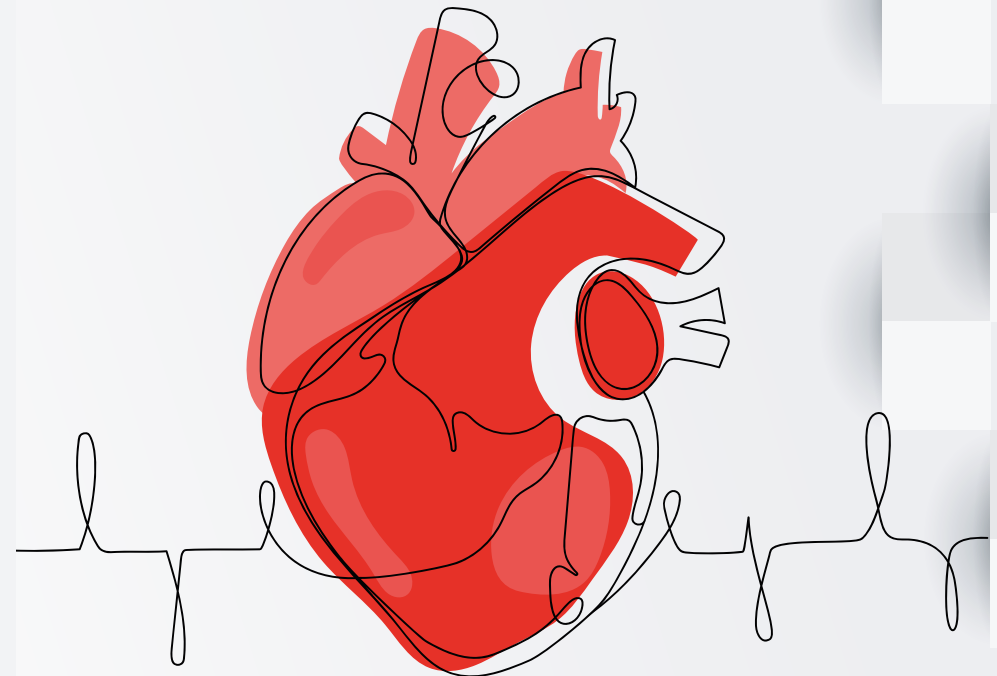
Grupo de Técnicas de Diagnóstico Intracoronario

COURSE ON ADVANCES IN THE DIAGNOSIS AND TREATMENT OF PATIENTS WITH **MINOCA**

February 2nd, 2024

HOTEL BARCELÓ SANTS

Barcelona
SPAIN



Structure

The course is composed of three blocks. In the first block we will address MINOCA as a clinical problem, its relevance and causes and the available evidence on medical therapy. In the second block we will discuss the use of diagnostic tools with the goal of reaching a specific diagnosis. The third block will be dedicated to an integrated overview of the diagnostic pathway and a look into the future of research in MINOCA. In each talk, the speaker is expected to reserve 3 minutes for questions and answers, and at the end of each block we will dedicate additional time to discussion. The talks will be complemented by a presentation of 3 clinical cases selected from those sent in advance by the faculty and the audience.

PROGRAM

- 9:30-9:50h** **Welcome and introduction**
- 9:50-10:10h** **The clinical problem of MINOCA. Prevalence, prognosis and costs**
Why we should pay attention to these patients.
Sergio García Blas, H. Clínico Valencia
- 10:10-10:30h** **Frequent causes of MINOCA**
What to look for, when and how.
Josep Gómez Lara, Bellvitge, Barcelona
- 10:30-10:50h** **Imbalance between oxygen supply and myocardial demand as a cause of MINOCA from the basic research.**
Diagnostic and therapeutic implications
Teresa Padró, H. Santa Creu i Sant Pau
- 10:50-11:10h** **Treatment of MINOCA**
Evidence based approach to individualized treatment
Xavier García-Moll, H. Santa Creu i Sant Pau
- 11:10-11:30h** **Discussion**
- 11:30-12:00h** **Coffee break**
- 12:00-13:00h** **Clinical cases presentation**
Case 1: 10 min presentation and 10 min discussion
Case 2: 10 min presentation and 10 min discussion
Case 3: 10 min presentation and 10 min discussion
- 13:00-13:20h** **A closer look at the coronary angiogram**
SCAD and other overlooked findings.
Fernando Alfonso, H. La Princesa, Madrid
- 13:20-13:50h** **The role of intracoronary imaging in MINOCA**
Complicated plaques and other diagnostic findings
Tom Johnson, Bristol, UK
- 13:50-14:10h** **The role of coronary physiology in MINOCA**
Spasm, endothelial dysfunction, milking, microvascular dysfunction.
Enrique Gutiérrez, H. Gregorio Marañón, Madrid
- 14:10-14:30h** **The role of non-invasive imaging in MINOCA**
Recognition of myocarditis, infarction, and other etiologies.
Eloisa Feliu, H. Universitario Alicante
- 14:30-15:00h** **Discussion**
- 15:00-16:00h** **Lunch break**
- 15:00-16:00h** **Hands-on workshop on coronary microcirculation assessment and OCT**
- 16:00-17:00h** **Clinical cases presentation**
Case 1: 10 min presentation and 10 min discussion
Case 2: 10 min presentation and 10 min discussion
Case 3: 10 min presentation and 10 min discussion
- 17:00-17:20h** **Integrating diagnostic tools in an effective diagnostic algorithm**
A step-by-step guide to diagnosis
Javier López País, Santiago de Compostela
- 17:20-17:40** **Imaging & Physiology Clinical Evidence and future perspective**
What we need from future clinical trials
Salvatore Brugaletta, H. Clinic Barcelona
- 17:40-18:00h** **Conclusions**